

Historic, Archive Document

Do not assume content reflects current scientific knowledge, policies, or practices.

02.55

= 195

LIBRARY RECEIVED

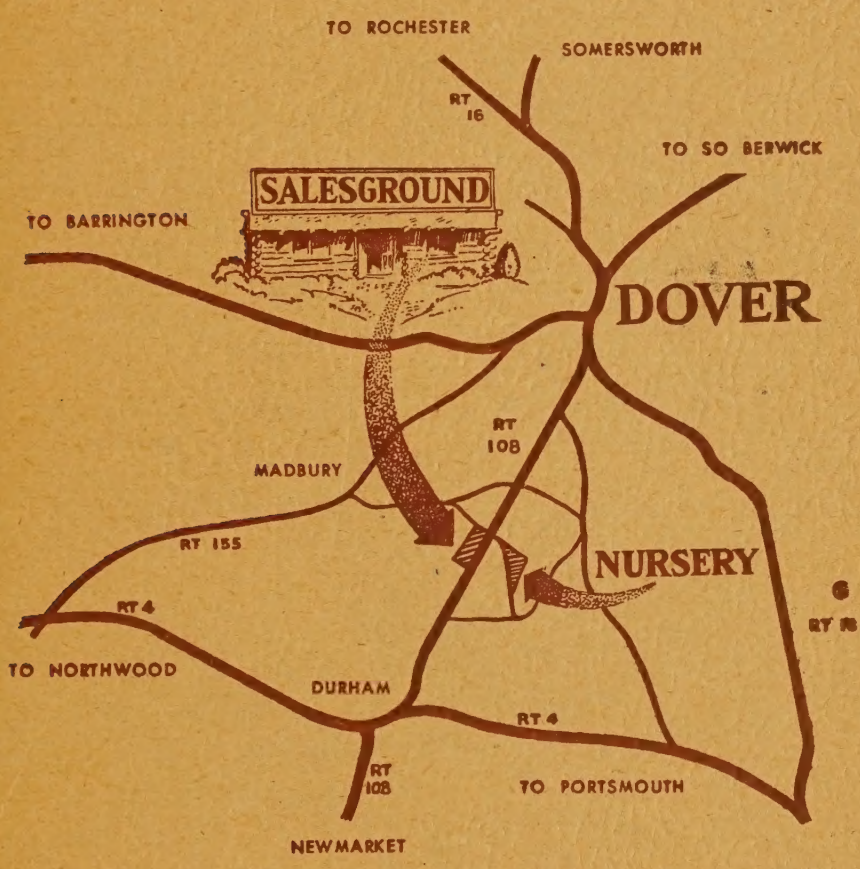
Retail Catalogue

APR 27 1951

Colpitt's Nursery

Dover, N. H.

"Where you saw the chrysanthemums"



Wholesale and Retail

Largest growers of hardy perennials and rock plants in New Hampshire

Visit Our Nursery

Located on Route 108 just half way between Dover and Durham, being three miles from either place. Easily accessible from Northern Mass. and Southern Maine as well as all points in New Hampshire.

IMPORTANT

All trees and shrubs in this catalog are priced F. O. B. our nursery and will be shipped transportation charges collect unless other provisions have been made.

Perennials will be shipped post or express charges prepaid at the prices quoted.

We guarantee our stock to be true to name, to be vigorous and healthy at time of shipment and that it will survive the transplanting period if given reasonable care by the purchaser. We cannot be responsible for winter damage, dog damage or other conditions beyond our control.

We will replace, F. O. B. our nursery, any stock not meeting these requirements provided such failure is reported within ninety days of purchase.

Under no circumstances will we be responsible for a greater amount than the purchase price.

Evergreen Trees

CHAMAECYPARIS— <i>Obtusa nana</i>		Dwarf Cypress
Slow growing, deep green foliage.		
12-15 in. spread	4.00
<i>Pisifera</i>		Pea fruited Cypress
2-2½ ft.	4.00
2½-3 ft.	5.00
<i>Filifera</i>		Thread branched Cypress
18-24 in.	3.25
2-3 ft.	4.50
<i>Plumosa</i>		Plumed Cypress
2-2½ ft.	3.75
2½-3 ft.	4.50
<i>Plumosa aurea</i>		Golden Cypress
18-24 in.	3.00
2-2½ ft.	4.00
JUNIPERUS— <i>Pfitzeriana</i>		Pfitzer's Juniper
Spreading gray green feathery foliage.		
15-18 in. spread	3.00
18-24 in.	4.50
2-2½ ft.	6.00
<i>Sargenti</i>		Sargent Juniper
15-18 in. grayish spreading	4.00
<i>Succica</i>		Swedish Juniper
Gray green, narrow columnar form		
2-3 ft.	2.50
3-4 ft.	3.50
<i>Excelsa Stricta</i>		Greek Juniper
Perfect pyramid steel blue foliage		
12-15 in.	2.00
15-18 in.	3.00
<i>Hetzi</i>		Hetz Blue Juniper
Bluish green horizontal branches		
15-18 in. spread	4.25
<i>Horizontalis plumosa</i>		Plumed Juniper
Purple in winter, green in summer		
15-18 in. spread	3.00
18-24 in.	4.00
<i>Sabina</i>		Savin Juniper
15-18 in. spread	3.00
18-24 in.	4.00
<i>Squamata Meyeri</i>		Myer's Juniper
Brilliant blue foliage, dwarf.		
15-18 in.	3.50
18-24 in.	4.50

<i>Virginiana</i>	Red Cedar
2-3 ft.	2.50
3-4 ft.	4.00
4-5 ft.	5.00
PICEA— <i>Excelsa</i>	Norway Spruce
Rapid growing evergreen.	
3-4 ft.	4.50
4-5 ft.	6.00
<i>Glauca</i>	White Spruce
Dense growing specimen.	
2-3 ft.	3.50
3-4 ft.	4.50
4-5 ft.	7.00
<i>Glauca nana</i>	Pigmy White Spruce
Round symmetrical dwarf.	
10-12 in.	2.75
12-15 in.	3.50
<i>Nidiformis</i>	Nest-shaped Spruce
Dwarf slow growing.	
10-12 in.	2.75
12-15 in.	3.50
<i>Pygmaea</i>	Pigmy Spruce
10-12 in.	2.75
12-15 in.	3.50
<i>Pungens glauca</i>	Colorado Blue Spruce
2-2½ ft.	7.50
3-4 ft.	12.00
PINUS— <i>Mughus</i>	Mugo Pine
Dwarf and compact.	
12-15 in.	3.50
15-18 in.	4.50
<i>Resinosa</i>	Red Pine
Fast growing, long needles.	
2-3 ft.	3.50
3-4 ft.	5.00
<i>Strobis</i>	White Pine
3-4 ft.	4.50
4-5 ft.	6.00
<i>Sylvestris</i>	Scotch Pine
3-4 ft.	4.50
PSEUDOTSUGA— <i>Douglasi</i>	Douglas Fir
Symmetrical, gray-green foliage.	
3-4 ft.	5.50
4-5 ft.	8.00

TAXUS— <i>Cuspidata</i>	Japanese Yew
Deep green foliage, spreading habit.	
12-15 in. spread	3.50
15-18 in.	4.50
18-24 in.	5.50
<i>Capitata</i>	Upright Yew
Broad pyramid.	
2½-3 ft.	10.00
3-3½ ft.	12.00
<i>Cusp. Nana</i>	Dwarf Yew
Very slow growing.	
12-15 in.	5.00
15-18 in.	6.00
TAXUS— <i>Hatfieldi</i>	Hatfield Yew
Dense, broadly columnar, dark green.	
15-18 in.	5.00
18-24 in.	6.50
2-2½ ft.	8.00
2½-3 ft.	10.00
THUJA— <i>Occidentalis</i>	Am. Arborvitae
2-3 ft.	3.50
3-4 ft.	5.00
4-5 ft.	7.00
<i>Hoveyi</i>	Hovey Arborvitae
Bright green, oval shape.	
15-18 in.	2.75
18-24 in.	3.75
2-2½ ft.	5.00
<i>Nigra</i>	Dark green Arborvitae
2-3 ft.	4.00
3-4 ft.	5.50
4-5 ft.	8.00
<i>Pumila</i>	Little Gem Arborvitae
Dense compact mound.	
12-15 in.	2.50
15-18 in.	3.00
<i>Pyramidalis</i>	Pyramidal Arborvitae
2-2½ ft.	3.00
2½-3 ft.	4.50
3-4 ft.	5.50
4-5 ft.	8.00
<i>Wareana</i>	Siberian Arborvitae
Broad, slow growing Pyramid.	
18-24 in.	3.00
2-2½ ft.	3.50
2½-3 ft.	5.00

<i>Woodwardi</i>	Globe Arborvitae
Most satisfactory globe.	
12-15 in.	2.50
15-18 in.	3.00
18-24 in.	4.50

TSUGA— <i>Canadensis</i>	Canada Hemlock
18-24 in.	3.50
2-2½ ft.	4.50
2½-3 ft.	5.00
<i>Diversifolia</i>	Japan Hemlock
18-24 in.	4.50
2-2½ ft.	6.00

EVERGREEN SHRUBS AND VINES

DAPHNE— <i>Cneorum</i>	Rose Daphne
Low spreading. Fragrant pink flowers.	
6-9 in.	1.50
9-12 in.	2.00

EUONYMUS— <i>Radicans</i>	Wintercreeper
Small leaves, clings to stone.	
2 yr.75
3 yr.	1.00

<i>Coloratus</i>	
Foliage purple to red in winter.	
2 yr.75
3 yr.	1.00

<i>Minimus</i>	Baby wintercreeper
Tiny leaves, good for rock garden.....	
	.75

<i>Vegetus</i>	Big leaf Wintercreeper
Large round leaves.	
2 yr.	1.00
3 yr.	1.50

HEDERA— <i>Baltica</i>	Hardy Ivy
Ground cover or shady wall.....	
	.75

KALMIA— <i>Latifolia</i>	Mountain Laurel
15-18 in.	4.00
18-24 in.	5.00

LEUCOTHOE— <i>Catesbaei</i>	
Arching branches, white flowers.	
15-18 in.	3.50

PACHYSANDRA— <i>Terminalis</i>	Japan Spurge
Evergreen ground cover	
	.35
Per 100	30.00

PIERIS— <i>Floribunda</i>	Andromeda
Bushy shrubs, white flower spikes.	
15-18 in.	4.50

Japonica

Shiny leaves, drooping white flowers.

15-18 in.	4.50
18-24 in.	6.00

VINCA—*Minor*

Periwinkle

Ground cover, blue flowers35
<i>Bowles Variety</i> . Improved45
<i>Alba</i> , white flowers.....	.35
<i>Rubra</i> , rare, reddish purple50

RHODODENDRON—*Carolinianum*

Carolina R.

Pinkish white to rose.

15-18 in.	4.75
----------------	------

Catawbiense

Catawba R.

15-18 in.	4.75
18-24 in.	5.75

Maximum

Rosebay R.

18-24 in.	4.50
----------------	------

Deciduous Trees

Prices on larger size trees than those listed will be given on request. The prices quoted below are for trees taken at the nursery and delivery and planting charges will be added when we are engaged to do so.

ACER—*Dasycarpum*

Silver Maple

Rapid growing shade tree, informal habit.

6-8 ft.	2.50
8-10 ft.	3.50
10-12 ft.	4.50

Platanoides

Norway Maple

Fine round headed shade tree.

6-8 ft.	4.00
8-10 ft.	5.00
10-12 ft.	9.00

Schwedleri

Schwedler Maple

Leaves red in spring, bronze green in summer.

8-10 ft.	7.50
10-12 ft.	10.00

Saccharum

Sugar Maple

8-10 ft.	5.00
10-12 ft.	7.50

Rubrum

Red Maple

Bright red in fall. Best for moist places.

8-10 ft.	4.00
10-12 ft.	6.00

BETULA—*Papyrifera*

Canoe Birch

Paper white bark as it matures.

4-6 ft.	3.50
6-8 ft.	4.50

<i>Pendula Gracilis</i>	Cutleaf Weeping Birch	
6-8 ft.		5.50
CERCIS— <i>Canadensis</i>	Redbud	
Deep pink flowers in Spring.		
4-6 ft.		4.50
CHIONANTHUS— <i>Virginicus</i>	White Fringe	
White flowers in May.		
4-5 ft.		2.50
CRATAEGUS— <i>Oxyantha Pauli</i>	Paul's Scarlet Thorn	
Double scarlet blooms.		
4-5 ft.		5.00
<i>Crus Galli</i>	Cockspur Thorn	
Glossy leaves, white blooms, red fruit.		
4-5 ft.		4.00
FAGUS— <i>Sylvatica Riversi</i>	Purple Beech	
3-4 ft.		9.00
4-5 ft.		12.00
MALUS— <i>Atrosanguinea</i>	Carmine Crab	
Single crimson flowers in spring.		
3-4 ft.		3.50
4-5 ft.		4.50
<i>Floribunda</i>	Japanese Crab	
Single pink blossoms.		
3-4 ft.		3.50
4-5 ft.		4.50
<i>Ioensis Plena</i>	Bechtel's Crab	
4-5 ft.		4.50
<i>Purpurea Eleyi</i>	Eley Crab	
Purple foliage, rosy carmine flowers.		
4-5 ft.		4.50
5-6 ft.		6.00
<i>Niedswetziana</i>	Redvein Crab	
Deep pink blooms, bronze foliage.		
4-5 ft.		4.50
5-6 ft.		6.00
PRUNUS— <i>Thundercloud</i>	Purple leaved Plum	
Deep purple leaves, pinkish white blooms.		
4-6 ft.		3.00
6-8 ft.		4.50
QUERCUS— <i>Rubra</i>	Red Oak	
Brilliant red fall foliage.		
10-12 ft.		10.00
12-14 ft.		14.00
<i>Palustris</i>	Pin Oak	
Brilliant coloring, fast growing.		
6-8 ft.		5.00
Specimen trees \$15. and up.		

SALIX— <i>Niobe</i>	Weeping Willow
Beautiful drooping yellow branches.	
5-6 ft.	3.00
6-8 ft.	4.00
<i>Pentandra</i>	Laurel Leaved Willow
Broad dark green leaves. Upright growth.	
5-6 ft.	2.00
6-8 ft.	3.50
SORBUS— <i>Aucuparia</i>	Mountain Ash
Orange scarlet berries.	
6-8 ft.	4.00
8-10 ft.	6.00
TILIA—	Linden
6-8 ft.	4.50
8-10 ft.	7.50
ULMUS— <i>Americana</i>	American Elm
8-10 ft.	4.00
10-12 ft.	6.00

DECIDUOUS FLOWERING SHRUBS

ARALIA— <i>Pentaphylla</i>	Five leaf Aralia
Spiny shrub for shady places.	
18-24 in.90
2-3 ft.	1.25
AMORPHA— <i>Canescens</i>	Leadplant
18-24 in.	1.25
AZALEA— <i>Calendulacea</i>	Flame Azalea
Yellow or orange flowers, late May.	
15-18 in.	3.00
18-24 in.	5.00
<i>Kaempferi</i>	Torch Azalea
15-18 in.	4.50
18-24 in.	6.00
<i>Mollis</i>	Chinese Azalea
15-18 in.	4.50
18-24 in.	6.00
<i>Poukhanensis</i>	Korean Azalea
Bushy growth, rosy lilac flowers.	
15-18 in.	4.50
<i>Schlippenbachii</i>	Royal Azalea
Pure pink blossoms in spring.	
18-24 in.	6.50
BUDDLEIA—	Butterfly Bush
Purple, white or pink	
.....	.90
<i>Alternifolia</i> , fountain butterfly bush.....	
.....	1.25

CARYOPTERIS—	Blue Mist
Profuse light blue in summer.....	.75
CARAGANA— <i>Arborescens</i>	Pea tree
Hardy shrub with yellow flowers in June.	
2-3 ft.90
3-4 ft.	1.25
4-5 ft.	1.50
CORNUS— <i>Alba</i>	Red twigged Dogwood
2-3 ft.90
3-4 ft.	1.25
<i>Elegantissima</i>	Variegated Dogwood
18-24 in.	1.25
2-3 ft.	1.75
COTONEASTER— <i>Divaricata</i>	Spreading Cotoneaster
Red berries in fall. Very fine.	
18-24 in.	1.75
2-3 ft.	2.50
<i>Horizontalis</i>	Rock Cotoneaster
Low spreading. Good for rock garden...	1.50
CYDONIA— <i>Japonica</i>	Japan Quince
Scarlet blooms in early spring.	
18-24 in.	1.00
2-3 ft.	1.50
DAPHNE— <i>Mezereon</i>	February Daphne
Purple flowers before leaves.	
15-18 in.	1.50
18-24 in.	2.25
DEUTZIA— <i>Lemoinei</i>	
Low shrub, clusters white in spring	
18-24 in.	1.50
15-18 in.	1.00
DIERVILLA— <i>Florida Venusta</i>	Hardy Weigelia
Rosy red flowers.	
2-3 ft.	1.50
<i>Sessilifolia</i>	Bush Honeysuckle
Yellow flowers, June and July	1.00
ELEAGNUS— <i>Angustifolia</i>	Rushian Olive
Silvery leaves and branches, tall.	
3-4 ft.	1.00
4-5 ft.	1.50
EUONYMUS— <i>Alatus</i>	Burning Bush
Cork bark, brilliant red fall foliage.	
2-3 ft.	3.50
3-4 ft.	4.50

<i>Alatus Compacta</i> , dwarf, compact		
18-24 in.		2.00
<i>Yedoensis</i>	Yeddo Euonymous	
2-3 ft.		1.25
3-4 ft.		1.75
4-5 ft.		2.50
EXOCHORDA— <i>Grandiflora</i>	Pearlbush	
Snow white flowers in May.		
4-5 ft.		2.00
FORSYTHIA— <i>Fortunei</i>	Golden Bell	
2-3 ft.90
3-4 ft.		1.25
HYDRANGEA— <i>Arborescens Grandiflora</i>		
18-24 in.75
2-3 ft.		1.00
<i>Paniculata Grandiflora</i>		
2-3 ft.		1.00
3-4 ft.		1.50
<i>Treeform</i>		
3-4 ft.		2.00
KERRIA— <i>Japonica Fl. Pl.</i>	Double Kerria	
Yellow flowers in midsummer.		
18-24 in.		1.50
KOLKWTZIA— <i>Amabilis</i>	Beauty Bush	
Long sprays of pink.		
2-3 ft.		1.50
3-4 ft.		2.00
LIGUSTRUM— <i>Amurense</i>	Amur Privet	
Very hardy hedge plant.		
18-24 in.	\$3.00 per 10, \$18.00 per 100	
2-3 ft.	\$4.50 per 10, \$24.00 per 100	
LONICERA— <i>Korolkowi Floribundi</i>	Blueleaf Honeysuckle	
2-3 ft.		1.00
<i>Zabeli</i>	Red Honeysuckle	
2-3 ft.		1.00
3-4 ft.		1.50
LONICERA— <i>Maacki</i>	Amur Honeysuckle	
Large shrub, white flowers, showy red fruit.		
2-3 ft.		1.00
3-4 ft.		1.50
<i>Syringantha Wolfi</i>	Lilac Honeysuckle	
18-24 in.		1.00
2-3 ft.		1.50

<i>Tartarica</i>	Pink Honeysuckle
2-3 ft.90
3-4 ft.	1.25
PHILADELPHUS— <i>Coronarius</i>	Sweet Mockorange
3-4 ft.	1.25
4-5 ft.	1.50
<i>Virginalis</i>	Double Mockorange
Semi-double blooms at intervals.	
18-24 in.	1.00
2-3 ft.	1.50
PHOTINIA— <i>Villosa</i>	Christmas Berry
White flowers, red berries, fall foliage.	
2-3 ft.	1.00
3-4 ft.	1.50
PRUNUS— <i>Glandulosa Rosea</i>	Pink Almond
Double pink flowers in early spring.	
2-3 ft.	1.50
<i>Tomentosa</i>	Nanking Cherry
Pinkish flowers in May, red cherries.	
2-3 ft.	1.00
3-4 ft.	1.25
4-5 ft.	1.50
<i>Triloba</i>	Flowering Plum
Double pink blooms on arching branches.	
3-4 ft.	2.50
4-5 ft.	3.00
RHODOTYPOS— <i>Kerrioides</i>	Jetbead
White flowers, black seeds, compact growth.	
2-3 ft.90
3-4 ft.	1.25
ROSA— <i>Hugonis</i>	Father Hugo Rose
Profusion of single yellow blooms.	
18-24 in.	1.00
2-3 ft.	1.50
<i>Rugosa</i>	Japanese Rose
Heavy foliage, pink or white blooms, hips.	
18-24 in.	1.25
2-3 ft.	1.50
SORBARIA— <i>Arborea</i>	Greater False-spiraea
Large, graceful panicles of white, rare.	
3-4 ft.	2.00
SPIRAEA— <i>Anthony Waterer</i>	Dwarf Red Spiraea
15-18 in.	1.00
18-24 in.	1.25

<i>Thunbergii</i>	Garland Spiraea	
2-3 ft.		1.00
3-4 ft.		1.25
<i>Trichocarpa</i>	Korean Spiraea	
Similar to Bridal Wreath, more arching and later.		
2-3 ft.		1.00
3-4 ft.		1.25
<i>Van Houttei</i>	Bridal Wreath	
2-3 ft.90
3-4 ft.		1.25
SYMPHORICARPOS— <i>Racemosus</i>		Snowberry
2-3 ft.90
3-4 ft.		1.25
SYRINGA— <i>Joseikaea</i>		Hungarian Lilac
Late blooming, purple flowers.		
3-4 ft.		1.25
<i>Persisa</i>	Persian Lilac	
2-3 ft.		1.25
3-4 ft.		1.50
<i>Vulgaris</i>	Common Lilac	
2-3 ft.		1.00
3-4 ft.		1.50
4-5 ft.		2.25
<i>Hybrid Lilacs</i> , hardy and very choice.		
2-3 ft.		2.00
3-4 ft.		2.50
4-5 ft.		4.00

In following varieties.

- Belle de Nancy*, double pink.
Charles Joly, double purplish red.
Charles the Tenth, large single violet.
Katherine Havemeyer, double blue flushed lilac.
Lucie Baltet, single flesh pink.
Mme. Casimir Perier, double white.
President Grevy, large double blue.

VIBURNUM— <i>Carlesi</i>		Fragrant Viburnum
Pink and white flowers, exquisite fragrance.		
18-24 in.		3.50
2-3 ft.		4.50
<i>Lantana</i>	Wayfaring tree	
White flowers, red fruit changing to black.		
2-3 ft.		1.00
3-4 ft.		1.25
<i>Lentago</i>	Nannyberry	
Tall, white blooms, blue fruit.		
3-4 ft.		1.25
4-5 ft.		1.50

<i>Americanum</i>	Cranberry Bush
2-3 ft.	1.00
3-4 ft.	1.25
WEIGELIA— <i>Florida</i>	Pink Weigelia
2-3 ft.	1.25
3-4 ft.	1.50
ZANTHORHIZA— <i>Apifolia</i>	Yellowroot
Excellent ground cover, height 2 ft.	
12-15 in.	1.00
15-18 in.	1.50

HARDY VINES AND CLIMBERS

AKEBIA— <i>Quinata</i>	
Deep green leaves, purple flowers	1.00
AMPELOPSIS— <i>Quinquefolia</i> woodbine75
<i>Tricuspidata</i> , Boston Ivy	1.00
ARISTOLOCHIA— <i>Sipho</i> , Dutchman's Pipe.	1.00
CELASTRUS— <i>Scandens</i> , Bittersweet75
CLEMATIS— <i>Paniculata</i>75
Large flowered hybrid clematis.....	2.00
<i>Henryi</i> , white; <i>Jackmania</i> , purple;	
<i>Mme. Andre</i> , red.	
BIGNONIA— <i>Radicans</i> , Trumpet Vine75
LONICERA— <i>Japonica</i> , <i>Halliana</i> , <i>Hall's</i>	
<i>Honeysuckle</i>75
<i>Jap. Purpurea</i> , purple leaved, rare.....	1.00
<i>Heckrottii</i> , goldflame honeysuckle	1.25
WISTERIA— <i>Sinensis</i> , blue wisteria	1.50

We recommend . . .

For dry sandy soils—

The following perennials: *Asclepias*, *Baptisia*, *Liatris*, *Oriental Poppy*, *Thermopsis*, *Hemerocallis* and *Yucca*.

For shady places—

Aconitum, *Ajuga*, *Anchusa*, *Aquilegia*, *Campanulas*, *Cimicifuga*, *Dicentra*, *Digitalis*, *Funkia*, *Pulmonaria*, *Veronica*, *Mertensia* and *Phlox Divaricata*.

These like moisture—

Doronicum, *Hibiscus*, *Lythrum*, *Iris Pseudacorus*, *Japan Iris*, *Monarda*, *Myosotis*, *Physostegia*, *Astilbe*, *Thalictrum*, *Ranunculus*, and *Trollius*.



AQUATIC PLANTS FOR POOL OR TUB GARDEN

WATER LILIES—*Chromatella*, large canary yellow blooms. \$1.50

Gladstone, beautiful, large, white. \$1.50

James Brydon, cup shaped, deep red. \$2.00

Rose Arey, very fragrant, brilliant pink. \$2.00

MARGINAL PLANTS—*Arrowhead*, 18 in., spikes of white flowers all summer. 35c

Acorus Variegata, green and white foliaged flag. 35c

Iris Pseudacorus, deep yellow water iris. 35c

FLOATING PLANTS—(Not frost hardy.) *Parrot Feather*, feathery green stems. 20c

Water Hyacinth, 8 in., bulbous leaves, blue spikes. 20c

Water Poppy, yellow flowers all summer. 20c

Hardy Perennials

The following list does not cover our complete line. We have many rare, new and more difficult species and varieties growing in our nursery.

You are invited to drop in at our salesground frequently and enjoy the various flowers as they appear.

HARDY PERENNIALS FOR THE FLOWER BORDER

35c each, \$3.50 per dozen except as noted

ACHILLEA—*Snowball*, 2 ft., double white flowers. June-Sept.

ACONITUM—*Fischeri*, 2-3 ft., dark blue. Sept.-Oct.
Spark's Variety, 4-5 ft., purplish blue. July-August.

ALLIUM—*Schoenoprasum*, Chives, valued for its onion flavor.

Stellatum, 2 ft., large round heads, light pink flowers.

ANCHUSA—*Dropmore*, 4 ft., beautiful gentian blue flowers.

AQUILEGIA—*Crimson Star*, striking crimson and white. May-June.

Mrs. Scott Elliot Hybrids, long spurred mixture.

ASCLEPIAS—*Tuberosa*, 2 ft., bright orange. July-Aug.

ASTER—*Alpinus*, *Wartburg Star*, 12 in., large blue, orange center.

Nova Anglaea, *Bountiful Rose*, 3 ft., our own origination, deep rose pink on compact, bushy plants. 50c
Harrington's Pink, a lighter pink and taller growing.
Blue plume, deep purplish blue.

Nova Belgi, *Beechwood Chalanger*, brilliant crimson red.

Blue Gown, very large blue flowers.

Mount Everest, 4 ft., pyramids of snowy white flowers.

Violetta, 4 ft., deep purple violet blooms.

BAPTISIA—*Australis*, 2-3 ft., deep blue pea-shaped blooms.

CAMPANULA—*Persicaefolia*, 3 ft., blue peachbell. June-July.

Persicaefolia alba, white peachbell.

CENTAUREA—*Dealbata*, 2 ft., rose pink cornflower. June-July.

Montana, 18 in., blue cornflower, or Bachelor's button.

CHELONE—*Lyonii*, 4 ft., pink turtlehead. Sept.

CIMICIFUGA—*Racemosus*, 4-6 ft., white spikes. Aug.

CLEMATIS—*Davidiana*, 3 ft., spikes of sky blue flowers. August. 50c

Mandschurica, 3 ft., fragrant white. August. 50c

COREOPSIS—*Auriculata superba*, 2 ft., yellow, brown near center.

Saxicola, August daisy, yellow, 3 ft.

Sunburst, 2 ft., semi-double golden, all summer.

DELPHINIUM—*Pacific hybrids*, mixed colors. 50c

Black Knight, deep violet blue. 75c

Galahad, best double white. 75c

Summer Skies, clear light blue. 75c

Chinensis, *Blue Mirror*, 18 in., deep blue, all summer.

DIANTHUS—*Atrococcineus*, double dark crimson, all summer.

Latifolius, *Beatrix*, 12 in., double salmon pink.

Furst Bismark, deep rose.

Silvermine, pure white.

Her Majesty, white carnation flowered.

Wallace Red, new brilliant crimson, all summer. 50c

- DICENTRA—*Eximea*, 12 in., rose pink, all summer.
Sweetheart, new white form of above. Choice, 50c
Spectabilis, old fashioned bleeding heart. 75c
- DICTAMNUS—*Alba*, 2 ft., white flowered gas plant. 75c
Ruber, rosy flowers in June-July.
- DIGITALIS—*Giant Shirley*, 5 ft., foxglove in mixed colors.
- DORONICUM—*Excelsum*, large lemon daisies in early spring. 50c
- ECHINOPS—*Ritro*, 3 ft., metallic blue globe thistle.
- FUNKIA—*Lancifolia*, 2 ft., narrow foliage, lavender flowers
Ovata, *Thomas Hogg*, large leaves margined white.
Subcordata grandiflora, white flowers, immense leaves.
 50c
Undulata variegata, green and white leaves.
- GAILLARDIA—*Grandiflora*, our extra hardy selection.
Burgundy, all red blooms all summer.
- GEUM—*Fire Opal*, large double orange scarlet flowers.
 50c
Princess Juliana, orange yellow. May-July. 50c
Wilton Ruby, new scarlet red. June-July. 50c
- GYPSOPHYLA—*Paniculata*, *Baby's Breath*, 2 ft.
Rosy Veil, 15 in., double pink tinted. 50c
- HELENIUM—*Autumnale*, 3-4 ft., broad heads, golden yellow. Aug.-Sept.
Riverton Gem, gold and terracotta red.
- HELIOPSIS—*Incomparabilis*, 3 ft., double golden flowers all summer. 50c
- HEMEROCALLIS—*Goldeni*, 2 ft., golden orange. June-August.
Hyperion, 3 ft., large lemon yellow. 50c
Kwanso Flora Plena, double gold and bronze.
Mikado, orange with mahogany spot on each petal.
 50c
Sir Michael Foster, large yellow, curled petals. 50c
- HEUCHERA—*Rosamondi*, pink flowers on tall spikes.
Pluiede Feu, bright scarlet coral bells. 50c
- HIBISCUS—*Mallow Marvels*, 5 ft., giant flowers, pink, red, white. 50c
- IRIS—German or bearded.
Alta California, tall yellow.
Black Wings, blue black.
Blue Monarch, tall mid-blue.
Caprice, rosy pink.
Destiny, giant blue purple.
Desert Gold, very early yellow.
Depute Nomblot, red and purple.
Dog Rose, soft pink
Giant Baldwin, giant light blue.

Golden Majesty, deep yellow.
Gudrun, very large white.
Lent A. Williamson, purple.
Morning Splendor, reddish purple.
Pluie d'Or, good yellow.
Red Ember, dwarf deep red.
Snow Flurry, pure icy white.
Souvenir dr Mad. Gaudichau, purple.
Shah Jehan, cream standards, purple falls.
Valerie West, bronze.
Kaempferi, Japanese iris.
Gold Bound, double white, gold banded.
Purple and Gold, deep violet purple.
Mahogany, double velvety red.

LIATRIS—*Pycnostachya*, 4-5 ft., tall spikes of rich purple.

White Spire, 3-4 ft., beautiful for cutting. Sept.

LILIES—*Auratum*, gold banded lily, 3-5 ft. August. 75c

Henryi, 4-5 ft., orange yellow with brown spots. Aug. 75c

Regale, 3-4 ft., beautiful white lily with lilac reverse. 65c

Speciosum, 3-4 ft., white suffused and spotted crimson. 75c

Superbum, Turk's Cap Lily, yellow spotted brown.

Umbellatum, upright blooming orange red.

LINUM—*Narbonense*, heavenly blue.

Perenne, 18 in., everblooming blue flax.

LUPINES—*Russell Hybrids*, 2-3 ft., mixed colors.

LYSIMACHIA—*Clethroides*, 2 ft., graceful white spikes.

Vulgaris, 3-4 ft., golden yellow.

MENTHA—*Piperita*, peppermint.

Rotundifolia, Applemint, Woolly leaves, delicate flavor.

Spicata, Spearmint, for flavoring drinks and jelly.

Crispa, attractive dark green curled leaves.

MERTENSIA—*Virginica*, Virginia bluebell, good in shade.

MONARDA—*Cambridge Scarlet*, 3-4 ft., Beebalm.

Croftway Pink, new beautiful pink. 50c

NEPETA—*Six Hills Giant*, blue flowers, greyish foliage.

PAEONIA—*Couronne d'Or*, milk white. \$1.00

Festiva Maxima, most popular white, flecked crimson. \$1.00

Georgiana Shaylor, light pink flecked crimson. \$1.25

Karl Rosenfield, very bright crimson. \$1.00

Martha Bullock, large rose pink. \$1.50

Mons. Jules Elie, light rose pink. \$1.00

Officinalis rubra, early old fashioned red. \$1.50

Philippe Rivoire, very dark rich crimson. \$2.50

Tenuifolia, Fernleaf foliage, rich crimson. \$2.00

- PAPAVER—*Nudicaule*, Iceland poppy, mixed colors.
Orientalis, the orange scarlet Oriental Poppy. 50c
Beauty of Livermore, dark crimson. 75c
Mrs. Perry, salmon pink. 75c
Perry's White, large white, black blotch. 75c
- PENSTEMON—*Barbatus Torreyi*, Spikes bright scarlet.
 June-Sept.
Rose Elf, 2-3 ft., new lovely coral pink. 50c
Firebird, new ruby crimson, summer and fall. 50c
 Mixture of interesting species and varieties.
- PHLOX—*Decussata*, tall hardy phlox. These varieties
 50c each.
Africa, deep scarlet.
Anna Cook, soft pink, carmine eye.
Caroline Vandenburg, lavender blue.
Charles Curtiss, sunset red.
Daily Sketch, salmon pink, deeper eye.
George Stipp, salmon, lighter eye.
Leo Schlageter, scarlet red.
Lilian, cameo pink.
Marie Louise, large pure white.
Morgenrood, deep glowing rose.
Newbird, Amaranthe red.
Nordlight, carmine pink, red eye.
San Antonio, dark blood red.
- PHYSOSTEGIA—*Rosy Spire*, 3½ ft., new rosy crimson.
 Sept.
Summer Snow, pure white spikes. Aug-Sept.
- PLATYCODON—*Grandiflora*, 2 ft., blue or white balloonflower.
Mariesi, dwarfer than the above.
- POLEMONIUM—*Coeruleum*, 2 ft., Jacob's Ladder,
 blue.
- PYRETHRUM—*Painted daisy*, mixed hybrids.
- RUDBECKIA—*Purpurea*, 3 ft., large purplish cone-flowers.
The King, improved variety, crimson red blooms. 50c
White Lustre, new white continuous bloomer. 50c
- SALVIA—*Nemorosa*, new purple spikes, good foliage.
 50c
Azurea, 3-4 ft., sky blue. August-Sept.
- SCABIOSA—*Caucasica*, lavender blooms all summer.
- SEDUM—*Spectabile*, 12 in., flat heads, pink flowers.
Brilliant, improved variety, crimson blooms.
- SIDALCEA—*Mr. Lindburg*, 2-3 ft., new beautiful pink.
 \$1.00
- STOKESIA—*Blue Moon*, large deep blue flowers. 50c
- THALICTRUM—*Adiantifolium*, 2 ft., white spikes,
 fernlike foliage.
Glaucum, Chinese yellow, blue gray foliage. 50c
Lavender Mist, 5-6 ft., new, airy sprays of lavender. 50c

THERMOPSIS—*Caroliniana*, 2-3 ft., yellow lupin like blooms.

TRADESCANTIA—*Brevicaule*, Pink Spiderwort.

James Weguelin, new light azure blue. 50c

Iris Pritchard, new white variety.

TROLLIUS—*Europeus*, Orange Globe, Globeflower or double buttercup. 50c

Ledebouri, Golden Queen, large orange flowers. 50c

VERONICA—*Amethystina*, light blue.

Holophylla Littoralis, new and rare. Beautiful large shiny leaves, long spikes, indigo blue flowers. 50c

Crater Lake Blue, 12 in., lovely deep blue. May-June. 50c

Incana, 12 in., attractive silvery foliage, dark blue.

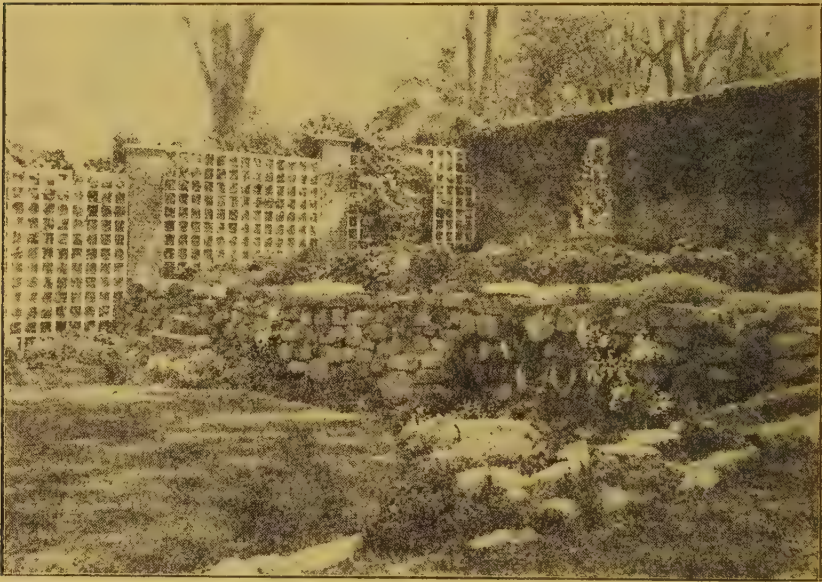
Rosea, charming pink spikes and silver foliage. 50c

Longifolia Subsessilis, 18-24 in., deep blue spikes. 50c

Royal Blue, 12 in. bushy plants, dark blue flowers.

Spicata, 2-3 ft., violet blue. July-August.

YUCCA—*Filamentosa*, 4-6 ft., large creamy white. Likes sandy soil.



ROCK GARDEN AND EDGING PLANTS

35c each, \$3.50 per dozen except as noted

ACHILLEA—*Tomentosa*, flat heads, clear yellow. May-June.

AETHIONEMA—Pink daphne like blooms, bluish foliage. 50c

AJUGA—*Genevensis*, 6 in., deep blue upright spikes.

Reptans, creeping blue flowers. A good ground cover.

Alba, white flowered form of above.

Rosea, large spikes of pink.

Rubra, purple leaved with blue flowers.

Variiegata, green and white leaves.

ALYSSUM—*Montanum*, 4 in., compact little plants, yellow blooms.

Saxatile, *Basket of Gold*, yellow in April and May.

ANCHUSA—*Myosotidiflora*, heart shaped leaves, blue for-get-me-nots.

ANEMONE—*Pulsatilla*, large violet purple, tulip-like, very early spring.

Sylvestris, nodding white flowers on 12 in. stems.

AQUILEGIA—*Flabellata nana*, dwarf, short spurred flowers.

ARENARIA—*Montana*, 3-5 in., white cupshaped blooms in early spring.

ARABIS—*Alpina*, 6 in., pure white. June.

Rosea, delicate pink.

Albida Fl. Pl., 6 in., double white flowers. 50c

ARMERIA—*Caespitosa*, cushion-like plants covered with pink heads. 50c

Lauchiana, 6 in., rosy flowers almost continually.

Cephalotes, grasslike foliage, pink blooms.

ARTEMISIA—*Silver Mound*, new compact mounds of silver foliage. 50c

ASTER—*Alpinus*, 6-8 in., bright blue daisies. May-June.

Countess of Dudley, 9 in., bright pink. Sept.

Niobe, 8 in., pure white. Sept.

Victor, 6 in., pale blue in great profusion.

AUBRIETIA—*Deltoides*, 3 in., lilac blue. May.

CAMPANULA—*Carpatica*, 8 in., large cup shaped blue flowers all summer.

Carpatica alba, white form of above.

Garganica, trailing plant, blue flowers, June-Sept. 50c

Glomerata acaulis, compact plant, violet blooms. 50c

Poscharskyana, *Blue Stars*, 8 in., light blue all summer. 50c

CERASTIUM—*Tomentosum*, *Snow in Summer*, white flowers, silvery foliage.

COREOPSIS—*Verticillata nana* 8 in., orange yellow all summer.

DIANTHUS—*Little Joe*, 5 in., large crimson flowers all summer. 50c

Mrs. Dina Weller, 6 in., large lavender with dark center. 50c

Rose Dawn, 3 in., single pink blooms on bluish tufted foliage.

Sammy, 5 in., double very fragrant pink blooms. Choice 50c

Wallace Red, 8 in., new crimson red all summer, striking. 50c

DICENTRA—*Eximea*, Everblooming Bleeding Heart. *Sweetheart*, new white form of the above. Good in shade. 50c

- DIGITALIS—*Thapsi*, 15 in., salmon pink foxgloves, rare and good.
- EPIMEDIUM—Bronzy green leaves, white, pink, or yellow. Moist shade. 50c
- EUPHORBIA—*Myrsinites*, trailing blue green plants, yellow blooms.
Polychroma, 12 in., showy yellow flower bracts in May. 50c
- GERANIUM—*Lancastriense*, 6 in., light salmon pink, all summer.
- GYPSOPHILA—*Repens*, creeping plant with tiny white or pink flowers.
- IBERIS—*Little Gem*, 4-6 in., very compact, white flowers.
Sempervirens, 8 in., hardy candytuft.
Snowflake, larger pure white flowers. 50c
- IRIS—*Cristata*, 3 in., crested light blue flowers.
Cristata alba, rare white form of above. 75c
Pumilla, 8 in., blue white, yellow dwarf iris.
- LOTUS—*Corniculatus Fl. Pl.*, trailing, yellow peashaped flowers.
- LYCHNIS—*Viscaria Fl. Pl.*, 15 in., rosy pink flowers in June.
- MYOSOTIS—*Palustris semperflorens*, everblooming forget-me-not.
- OENOTHERA—*Missouriensis*, large yellow blooms on trailing plants.
- PHLOX—*Amoena*, 8 in., deep pink in May.
Divaricata, 12 in., blue flowers, does well in shade.
Subulata, 4 in., pink or white in May.
Rochester, showy deep red variety.
Emerald Cushion Blue, 'new, beautiful foliage.
Emerald Cushion Pink, beautiful clear color.
- PLUMBAGO—*Larpentae*, deep blue flowers in late summer. 50c
- POLEMONIUM—*Reptans*, 10 in., light blue flowers, fernlike foliage.
- POTENTILLA—*Tonguei*, very dwarf cinquefoil. Apricot with crimson center. 50c
- PRIMULA—*Munstead Giant*, 6-8 in., many brilliant colors. Moist shade. 50c
- PULMONARIA—*Augustifolia*, 6 in., sky blue on spreading plants.
Saccharata, green and silver spotted foliage. Pink and blue. 50c
- RANUNCULUS—*Repens Fl. Pl.*, double trailing buttercup.
- SANTOLINA—*Chamaecyparissus*, 12 in., evergreen silvery foliage.

SAPONARIA—*Ocymoides*, trailing habit, pink flowers in spring.

Ocymoides alba, white variety originating with us. Very fine.

SAXIFRAGA—*Cordifolia*, large evergreen leaves, dense pink spikes in spring.

SEDUM—*Acre*, 2 in., mossy green foliage carpeted with gold in June.

Album, 4-6 in., reddish foliage with sprays of white in June.

Kamschaticum, 6-8 in., bright orange flowers. July-Aug. *Variegatum*, beautifully colored leaves.

Pruniatum Fosterianum, trailing, blue-green leaves, yellow fl.

Spurium Coccineum, 6 in., semi-trailing, bright red. August.

Sieboldii, Colored leaves, rosy flowers in fall.

Stoloniferum, 6 in., pink flowers on trailing plants in fall.

SEMPERVIVUM—Hen-and-chickens in several varieties.

SILENE—*Maritima*, 3 in., large white flowers all summer.

TEUCRIUM—*Chamaedrys*, 8-10 in., glossy green foliage. Edging plant.

THYMUS—*Lanuginosa*, woolly-leaved carpeting plant. *Serpyllum album*, white carpet, fragrant foliage.

Coccineum, purplish red flowers, fragrant creeping foliage.

Herba Barrone, 6 in., deep green foliage, purple blooms

VERONICA—*Pectinata*, prostrate woolly foliage, rare. 50c

Rupestris Nana, carpet of green leaves, light blue flowers.

Spicata Nana, 3-4 in., rare plant with tiny deep blue spikes. 50c

Teucrium Prostrata, creeping stems, dark blue blooms.

Rosea, rare pink variety of the above. 50c

VIOLA—*Odorata*, *Double Russian*, deep purple sweet smelling violet. 50c

Empress Augusta, single fragrant purple violet.

Rosina, tiny pink fragrant flowers, spring and fall.

Royal Robe, deepest violet blue, large and fragrant. 50c

Canadensis, white flowers with purple veining.

Rotundifolia, 8 in., yellow violets on branching stems.



Hardy Chrysanthemums

A Specialty with us

See our display during the fall months.
All chrysanthemums 50c each, \$5.00 dozen.

NOVELTIES FOR 1951

Three exclusive introductions from our
breeding plots

BERTHA DAMON—Very large and beautiful deep rose pink, blooming in late September. Named for Mrs. Bertha Damon, past President of The New Hampshire Federation of Garden Clubs and well known as author of "A Sense of Humus," "Grandmother Called It Carnal" and other books.

MRS. GEORGE H. WARREN—Large aster type bloom of soft lavender suffused with pink. Mrs. George H. Warren of Manchester and Newcastle is well known for her beautiful estate at Newcastle. Because of Mrs. Warren's interest in the introduction of new and rare varieties of trees, shrubs and plants, we are happy to name this chrysanthemum in her honor.

HELEN FUNKHAUSER—A late blooming button chrysanthemum shading from pink to deep rose at the center.

Mrs. Funkhauser is Executive Secretary of the New Hampshire Roadside Beautification Contest, past President of the New Hampshire Federation of Garden Clubs and, in musical circles, a well-known soloist.

HARDY CHRYSANTHEMUMS

Especially selected for New England

50c each, \$5.00 per dozen

- ARBUTUS—Large early delicate pink, aster type.
- AVALANCHE—Fine large white shading to gold at center.
- BUTTERBALL—Very good yellow blooming in early September.
- COURAGEOUS—Large, double, dark ruby red.
- DULUTH—Creamy yellow blooms from late August on.
- EXETER—Large, double bronzy yellow. Very profuse.
- FLEUR—Deep amaranthe red. Early and profuse.
- FRANCONIA—Bronzy yellow Pompon. Very early, tall.
- HUNTSMAN—Large, double, scarlet.
- KING PHILIP—Scarlet red single blooms, very profuse.
- KLONDIKE GOLD—Frost resistant golden yellow, October.
- LAVENDER LADY—Large double lavender blooms, late September.
- ORANGITE—Brilliant orange, late September. Good for cutting.
- POLAR ICE—Clear blue white aster type in early September.
- RED RIDINGHOOD—Outstanding deep velvety red, tall.
- SUNAPEE—Early, golden yellow. Good for cutting.
- TOCSIN—Fiery red with carmine undertones, October.
- TREASURE TROVE—Small clear yellow on stiff stems.
- WELCOME—Early rich purple. Arranges fine with yellow.
- WINNIPESAUKEE—Coral red pompons changing to rich salmon.

Cushion Chrysanthemums

COCHECO—Purplish buds opening to orchid pink blooms, profuse.

BRONZE CUSHION—Very early double bronzeflowers.

GOLDEN CARPET—Creeping plant, profuse yellow pompon.

LADY WENTWORTH—Early and prolific, tinted white.

MAJOR CUSHION—September blooming, deep pink

PURPLE CUSHION—Large lavender purple.

PUNCHINELLO—Densely double pompons, pink, 8-10 inches.

OLD DOVER—Semi-double, bronzy yellow all summer, dwarf.

SANTA CLAUS—Brilliant and profuse red.

YELLOW CUSHION—Clear light yellow, free blooming.

SNOW QUEEN—Pure white pompon, good substance and foliage.

LANDSCAPE CONSTRUCTION

Let us design and plant your home grounds. Flagstone terraces, outdoor living rooms, fish and lily pools and rock gardens constructed.

New Hampshire Registered Arborist. Over forty years Horticultural Experience.



Colprit's Nursery and Seed Farm

**R. F. D. 1
Dover, N. H.**

Return Postage Guaranteed

Sec. 34.66
P. L. & R.

U. S. DEPARTMENT OF AGRICULTURE

LIBRARY

WASHINGTON 25, D. C.

**PENALTY FOR PRIVATE USE TO AVOID
PAYMENT OF POSTAGE, \$300
(GPO)**

OFFICIAL BUSINESS

PRINTED MATTER

**Library, U. S. Dept. of Agriculture,
WASHINGTON 25, D. C.**